



TOUGH PROJECTS. INNOVATIVE SOLUTIONS.



COMPANY PROFILE

WW CLYDE

Since 1926, WW Clyde (WWC) has been a leader in the civil construction industry, pioneering new procurement methods, utilizing the latest technology, and always holding true to our core values.

SOUTHWEST DIVISION

WW Clyde acquired Phoenix-based Blount Contracting Inc. (Blount) in 2020, and will continue doing business under the name of **WW Clyde** to strengthen their energy, drilling, and shoring divisions as they strategically expand in Arizona and other southwestern states.

RESOURCES AND EXPERIENCE

Employing between 350-500 employees at any given time, **WWC is one of the largest and most diversified Utah-based contractors and has played a significant role in heavy civil construction and mining in the Intermountain West with proven success in Utah, Nevada, Arizona, Wyoming, Idaho, and Colorado.** Some

wwclyde.net

of these projects have included mining, mass excavation, site preparation, utility installation, water treatment plants, reservoirs, bridges, and highways. These have been constructed using negotiated, traditional bid-build, and alternative delivery methods including CMGC and Design-Build. WWC is well suited to mobilize quickly with significant resources including company-owned equipment and highly-skilled personnel.

EQUIPMENT

From a fleet of over 300 pieces of major heavy civil equipment including dozers, graders, backhoes, excavators, loaders, and trucks, WWC has the resources and equipment necessary to complete all of your heavy civil and mining needs.

BONDING CAPACITY

WWC has been constructing projects ranging in size from \$500K to \$100M. Our bonding capacity in the single project level is \$150M, with an aggregate level of \$500M.

*Wilberg Cottonwood Mine Reclamation
Emery County, Utah*

WWC CONSTRUCTS PROJECTS RANGING FROM \$500K TO \$100M WITH PROVEN SUCCESS IN UTAH, NEVADA, ARIZONA, WYOMING, IDAHO, AND COLORADO





**WWC IS A NATIONALLY RECOGNIZED LEADER IN SAFETY
WITH A CURRENT EMR RATING OF .15 AND A TRIR OF .5**

SAFETY

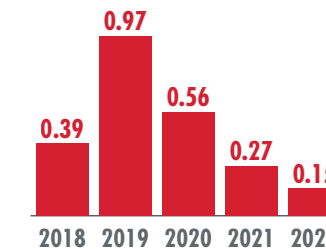
At WWC, we are committed to high safety standards because we value people. Our commitment to health and safety includes not only our crews but also our partners, clients, and community members. WWC maintains a robust safety program with dedicated safety staff that support all of our projects. We build safety into our culture because our ultimate goal is always "We All Go Home Safe."

In order to maintain this culture of safety, all employees have a part in incident prevention, safety of fellow workers, and enforcement of all safety requirements and procedures. We build safety into the work through daily morning safety talks, toolbox trainings, and

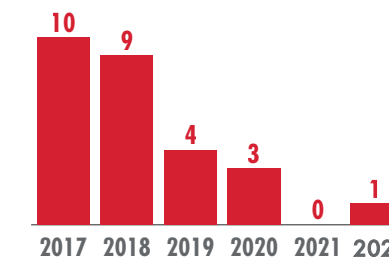
job hazard analyses, ahead of work activities. Through proper planning and continuous communication we eliminate safety hazards and prevent damage, injury, and loss to our employees, subcontractors, consultants, and other project participants.

WWC is a nationally recognized leader in safety and proudly displays some of the best safety statistics in the industry. Our current EMR rating is .15 and TRIR is .5

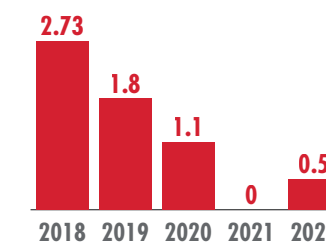
EMR



RECORDABLES



TRIR



MSHA

WWC has been working productively and safely in mine settings for over 70 years in processes such as mine reclamations, site improvements, mine product relocation, site construction, crushing, and infrastructure. We have worked within the mining industry under both MSHA Part 46 and 48.

WWC has a long history of providing safe operations. Collectively, our safety team has over 40 years of mining experience on the production side and over 70 years of safety experience in mining. WWC has MSHA Blue Card holders that assist in training, inspecting, and creation of proactive safety programs. When necessary, we utilize outside trainers with expertise in fields such as CAT and Komatsu experts for task training on specific equipment, and medical trainers for first aid, CPR,

and AED. We perform in house annual refreshers, experienced and new miner trainings, site specific trainings, and task trainings to maintain the most relevant, up-to-date specific training possible.

WWC provides continued and updated training and safety knowledge to its employees including daily Goal of the Day (Job Hazard Analysis), daily Tyfoom safety videos, weekly toolbox talks, monthly mass safety meetings, OSHA 10 and 30 training, and mine inspections. WWC's proactive and holistic approach to safety allows for us to continually adapt to owner expectations while keeping our safety on the frontlines.

Safety first, last, and always.

*Kennecott Utah Copper - Crushing Services
Lark, Utah*



**WWC HAS CERTIFIED IN-HOUSE BLUE CARD TRAINERS
PROVIDING HIGH QUALITY SITE AND EQUIPMENT
TRAINING FOR ALL OF OUR MINING PROJECTS**

East Waste Rock Expansion - Bulk Earthwork
Lark, Utah

**WWC EXCAVATED, HAULED, AND STOCKPILED MORE
THAN 12.5 MILLION CUBIC YARDS OF EARTH ON A
SINGLE PROJECT FOR KENNECOTT UTAH COPPER**

wwclyde.net

EARTHWORK

After nearly a century of experience and with the development of modern technology, we have the capability to move massive amounts of rock and earth.

From mass excavation to grading and site development, we provide a wide range of earthwork services. We have the bandwidth to complete both small and large projects, with the capability to move more than 12 million cubic yards

of earth on a single project. We are proud to ensure customer satisfaction—no matter the size of the project—with our genuine commitment to quality work and employee safety. We know that quality earthwork is the foundation that all great projects are built upon.

CRUSHING CAPABILITIES

Portable aggregate crushing equipment enables WWC to create additional value on projects. **We can save our clients time and money with portable crushing.** Our fleet of mining and crushing equipment allows us to open pits and quarries near the project site to manufacture specified products used for road base, pipe bedding, drain rock, structural backfill, and more.

We have the capability to recycle existing materials into reusable aggregate. Our ability to recycle eliminates wastes and potential costs of purchasing aggregate, and it also can reduce environmental impacts and save time that would be required for trucking additional material to the project site from offsite. With early contractor involvement we can offer competitive value on projects in various remote locations.



**WWC HAS MULTIPLE CRUSHING UNITS CAPABLE OF
CRUSHING ANY TYPE OF SPECIFICATION RANGING
FROM CONCRETE SAND TO DRAIN ROCK AND PIT RUN**

Materion - Rainbow Phase 2 IMU 2-3
Delta, Utah

**WWC HAS EXPERIENCE WORKING WITH SOME OF THE
LARGEST MINING ORGANIZATIONS IN THE
INTERMOUNTAIN REGION FOR OVER 60 YEARS**

MINING & RECLAMATION

WWC has worked with some of the largest mining organizations in the Intermountain West, as well as other state agencies on mining and reclamation projects. Many of these have included mass excavation and tunnels in geologically sensitive locations. **With WWC, you can expect a contractor familiar with and highly experienced in meeting federal regulations and quality standards for this type of work.**

We have experience in drilling/blasting, mining support, mining of ores and overburden, and mining reclamation.

We have the equipment and resources to support your mining efforts, such as off-road haul trucks, mass excavation excavators, and providing drilling and blasting.

Safety is our top priority, and we are willing to meet strict safety requirements for mining clients. We also have experience in achieving compliance with environmental regulations.

MINING EXPERIENCE



72 YEARS

Having started the Knight Ideal Coal Company in 1949, WWC has been involved in the mining industry for 72 years

RIO TINTO KENNECOTT

1960

WWC worked on its first project for Kennecott Utah Copper Corp.

\$78.6M

WWC's largest contract for Rio Tinto Kennecott

12.5M

Cubic yards of soil excavated, hauled, and stockpiled on a single project

\$133M

Worth of work performed since 1993

MATERION NATURAL RESOURCES

2007

WWC has worked safely and consistently for Materion since 2007

58,000

Hours worked on Rainbow Phase 2 without a single recordable

12.1M

Cubic yards of soil excavated and hauled for Materion

\$51M

Worth of work performed since 2007



40+

WWC has worked for over half a dozen mining and reclamation companies on over 40 different projects since 1993



RAINBOW PH 2

LMU 2-3

MATERION NATURAL RESOURCES DELTA, UTAH

The Rainbow Phase 2 LMU 2-3 project consisted of overburden stripping of 1,740,000 cubic yards of hard rock mining through drilling, blasting, and excavation. The project lasted six months with an average of 290,000 cubic yards/month of production. Due to the pit geology, the first and last month of production had significantly less volume. When not impacted by site constraints, the average experienced monthly production was 400,000 cubic yards/month.

Equipment used consisted of 190,000 lb. Komatus PC800 Excavators, 120 to 160,000 lb CAT 349-374 Excavators, CAT 775 Off Highway Trucks, 70 ton Dump Trucks, and support equipment such as CAT 825 Compactors, CAT D9 to D6 dozers, CAT 14 Motor Graders, and Water Trucks.

FINAL VALUE
\$10.7M

COMPLETION DATE
DEC 2020



1.74M CUYD
OF DRILLING, BLASTING,
AND EXCAVATION
OF OVERBURDEN

WILBERG COTTONWOOD MINE RECLAMATION

INTERWEST MINING CO.
EMERY COUNTY, UTAH

FINAL VALUE	COMPLETION DATE
\$2.5M	NOV 2017



**REVEGETATION &
PERMANENT SEDIMENT CONTROL**

Scope included removal of existing diversion culverts, excavating, hauling, backfilling, and compacting of soils, as well as separating coal waste and other extraneous material for a total of 175,000 cubic yards of earthwork. The project also included constructing diversion channels with specific filter layers and 13,000 cubic yards of riprap mainly consisting of excavated natural rock material on site, installation of permanent and temporary sediment control, and revegetation. Environmental regulations included, but were not limited to, storm water, water quality, and air quality.





EAST WASTE ROCK EXPANSION BULK EARTHWORK STRUCTURES & PIPE

**RIO TINTO - KENNECOTT
LARK, UTAH**

The East Waste Rock Expansion project consisted of two contracts as part of a massive modification endeavor. Scope for the Bulk Earthwork contract included stripping the topsoil for increased stability and use in future reclamation, and then approximately 12.5 million cubic yards of soils were excavated, hauled, and stockpiled in preparation for the Pipe and Structures contract. Throughout the project approximately 12,000 cubic yards of non-acid reactive rock was placed. Existing cut-off walls and other collection systems were demolished and removed. All work was done while maintaining operation of the existing contact water drainage system.

Scope for the Structures and Pipe contract included removal of nine existing cut-off walls that were intercepting acid mine drainage, removal of the existing upper collection pipeline, installation of 11 new walls, branch and mainline collection pipelines and their associated structures, and demolition of existing process piping and the installation of new pumps and process piping. Combined total pipeline ranged from 8" to 36" in diameter with a combined total length of approximately 60,769 linear feet. Work also included new roads, toe-drains, canal tie-in structures, inlet/outlet structures, and a settling basin.



**FINAL VALUE
\$78.6M**

**COMPLETION DATE
NOV 2016**




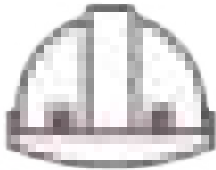
**\$1.5M
IN VALUE
ENGINEERING
SAVINGS**



**12.5M CUYD
SOIL EXCAVATED, HAULED,
AND STOCKPILED**

RAINBOW PHASE 1

MATERION NATURAL RESOURCES DELTA, UTAH


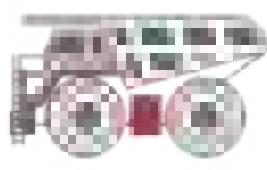
FINAL VALUE \$10.1M	COMPLETION DATE OCT 2010
 THREE MONTHS AHEAD OF SCHEDULE	 58,000 WORK HOURS WITH NO RECORDABLES

RAINBOW PHASE I | This strip mining project involved stripping and stockpiling 25,000 cubic yards of topsoil and the excavation of over 200,000 cubic yards of alluvium to expose the remaining 2.2 million cubic yards of rhyolite overburden. The overburden was removed utilizing a drill and blast technique while maintaining the integrity of a 230 foot high wall. Work also included the construction and maintenance of haul roads, ramps, and dumps. Equipment used for excavation consisted of CAT 631 Scrapers for alluvium removal and CAT 775 Trucks being loaded with CAT 365, 375, & 385 Excavators for rhyolite removal. The project ran as a double shift, 4 days per week, being completed 3 months ahead of schedule. The project was completed with over 58,000 work hours with no recordable injuries or lost time accidents.



MONITOR PHASE 1

MATERION NATURAL RESOURCES DELTA, UTAH

FINAL VALUE \$12.8M	COMPLETION DATE MAR 2013
 30 DAYS AHEAD OF SCHEDULE	 3.1M CUYDS OF SOIL MOVED

MONITOR PHASE I | This strip mining project involved stripping and stockpiling 30,000 cubic yards of topsoil and the excavation of over 400,000 cubic yards of alluvium to expose the remaining 2.7 million cubic yards of rhyolite overburden. The overburden was removed utilizing a drill and blast technique while maintaining the integrity of a 210 foot high wall. Work also included the construction and maintenance of haul roads and ramps. Equipment used for excavation consisted of CAT 631 Scrapers for alluvium removal and CAT 775 Trucks being loaded with CAT 375, 385, & 390 Excavators for rhyolite removal. The project ran as a double shift, 5 days per week and was completed 1 month ahead of schedule.

PIPELINES & DRAINAGE

WWC has extensive experience in constructing pipelines and drainage systems. We work with water districts, city, and state entities in building water infrastructure. **Our civil water projects emphasize water transmission, water infrastructure, and drainage solutions.**

TRANSMISSION| We understand the specific challenges and intricacies that pipelines require. We have experience with pipelines of all sizes (up to 120-inch) and types (WSP, HDPE, PVC, DIP). We also have experience building other water-based systems, including large scale aqueducts to support culinary and irrigation systems.

wwclyde.net

INFRASTRUCTURE PROJECTS| We are your industry specialist for constructing a large spectrum of infrastructure needs. We also have the ability and personnel to perform mechanical piping along with the installation of valves and flow meters. We are well versed and proficient in zonal embankment, structural concrete, metals, equipment installation, and dewatering.

DRAINAGE| We have the expertise to efficiently install a variety of drainage solutions for your project, from stormwater trunk lines to culverts to detention ponds.

*Jordanella Special Service District Pipeline Project
Heber, Utah*

WWC HAS EXPERIENCE WITH PIPELINES OF ALL SIZES (UP TO 120-INCH) AND TYPES (WSP, HDPE, PVC, DIP)



wwclyde.net

WWC HAS EXPERIENCE BUILDING RETAINING, PARAPET, MSE, CAST-IN-PLACE, AND FOUNDATION WALLS AS WELL AS SPILLWAYS, FOREBAYS, VAULTS, DRAINAGE SYSTEMS, SLABS, BRIDGES, AND ROADWAYS

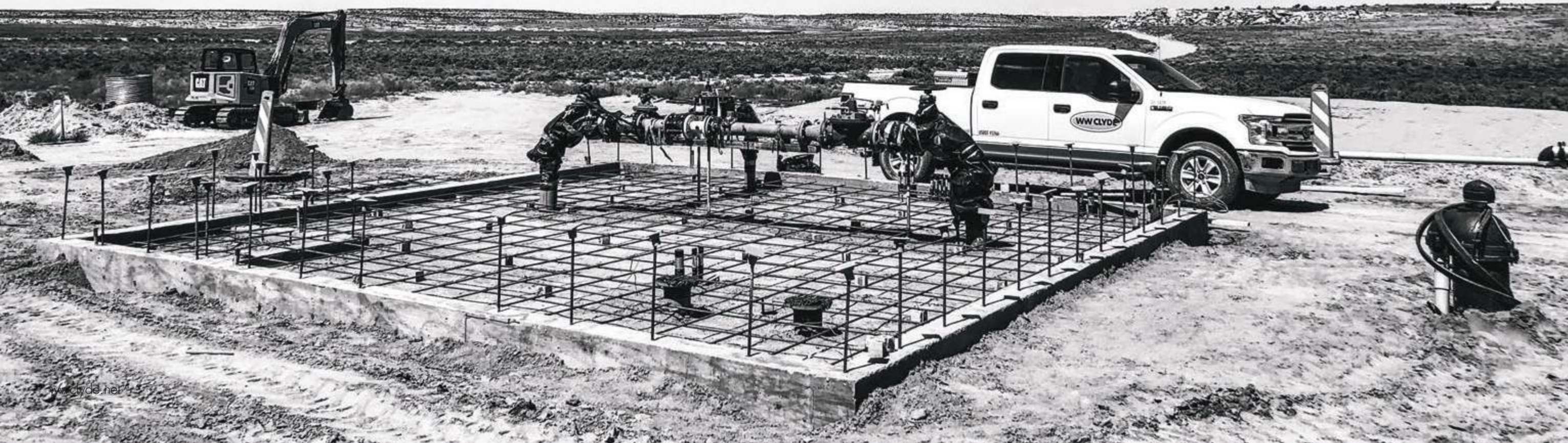
STRUCTURAL CONCRETE

Our structural concrete projects are built to last. WWC has a solid reputation for building quality concrete structures for a variety of construction needs.

We have experience in building the following concrete structures: foundations, slabs, box culverts, retaining walls, bridges, dams and spillways, wastewater treatment structures, large water tanks, inlet and outlet structures, drainage structures, and more.

WWC employs an experienced structural concrete team of highly-skilled professionals who can meet stringent quality standards and tight timelines while maintaining high safety standards.

Our diverse set of construction skills and services means we can handle a variety of project needs and client preferences. We ensure that our clients' goals and expectations are never compromised.



GEOTECHNICAL SOLUTIONS

Through the Southwest Division of WWC, we can provide safe, cost effective, and innovative geotechnical solutions.

These solutions will perfectly fit project needs with respect to deep foundation, earth retention, and shoring solutions.

We use proven and innovative shoring and drilling techniques, methods, and equipment to make sure our work meets the highest quality and safety standards.

WWC geotechnical solutions expertise includes the following products and services:

- Uncased drilled shafts
- Cased drill shafts
- Auger cast piles
- Micropile foundations
- Tunnels
- Soil nail shoring
- Beam and lagging shoring
- Underpinning shoring
- Shotcrete shoring
- Permanent shoring



PHX Sky Train,
Sky Harbor International Airport, AZ



ADOT Central Avenue on Central and I-17
Phoenix, AZ

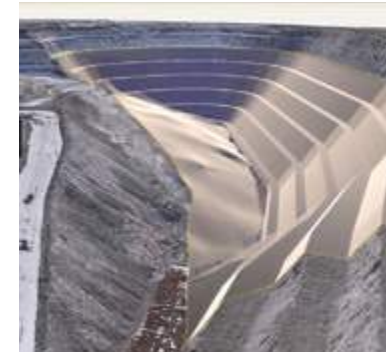
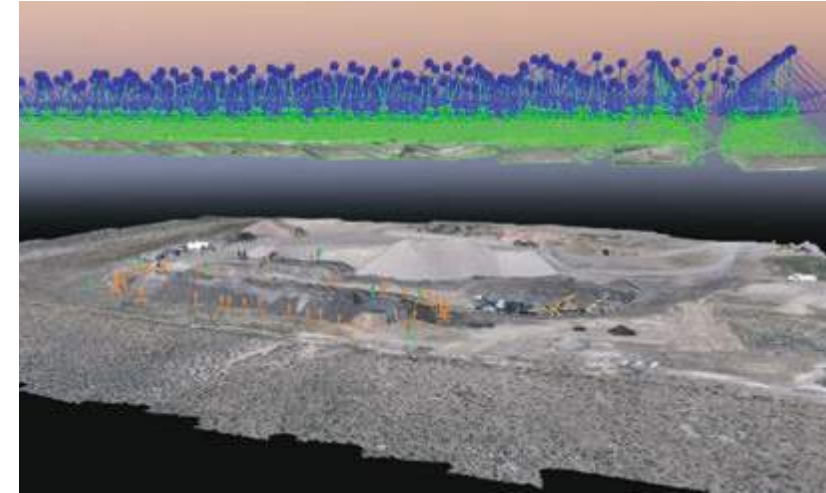


ADOT Central Avenue on Central and I-17
Phoenix, AZ

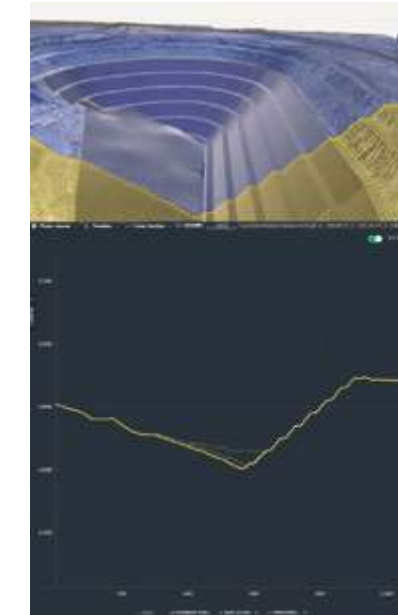
**OVER THE LAST FOUR YEARS WE HAVE
DRILLED OVER 177,600 LF AND PLACED
OVER 303,000 SQFT OF SHOTCRETE**



WWC CAN PROVIDE SERVICES SUCH AS FIXED AND AERIAL LIDAR, SURVEY, 3D AND BIM MODELING, AND THE LATEST MACHINE GUIDANCE CONTROL EQUIPMENT



Materion Rainbow Ph 2, LMU 2-3



SURVEY, TECHNOLOGY & INNOVATION

We live by our company motto: “Tough Projects. Innovative Solutions.” For years WWC has led the industry in implementing new 3D construction technologies to streamline work and to more efficiently build projects. Our company leadership has maintained a forward thinking vision of the possibilities, value, and benefits of building work from 3D models.

Evidence of this is our dedicated Construction Technology Department and our extensive investment in company-owned technology, from fixed and aerial LIDAR, 3D modeling software, the latest machine guidance control equipment, field tablets, software, and more. Our well maintained \$50M fleet of equipment includes top-of-the-line GPS and total station grade control systems, which allow our team to construct superior projects.

One of the many examples we have of our proven success in 3D modeling is receiving the 2016 Innovation Award from the Utah Department of Transportation for successfully advancing their Intelligent Design and Construction initiative on the SR-20 Passing Lane CMGC project.

Another example of providing innovative solutions is WWC performing the first Accelerated Bridge Construction slide method in Nevada along the I-15 corridor in Mesquite.

BONDING CAPACITY

WWC enjoys an excellent financial reputation and large bonding capacity. **With an aggregate bonding capacity of \$500M, WWC is capable of taking on projects of all sizes.** WWC is a privately held company and is part of Clyde Companies, Inc. which can provide a wealth of additional resources with annual revenue in excess of \$2B. Please see the adjacent bonding letter.

**\$500 MILLION
BONDING CAPACITY**



W.W. Clyde & Co. Statement of Bonding Capacity

To Whom It May Concern,

We understand that you have asked for our comments regarding the bonding capacity of the above captioned contractor.

Our records reflect that we have been associated with the referenced contractor for over 55 years. During that time, we have furnished numerous bonds on various projects. These projects range in size from one million dollars to one hundred million dollars. The projects have been both bid build and design build. During this time there has never been a bond or insurance request rejected.

W.W. Clyde & Co. has been doing business in the Utah market place for over 90 years. They are obviously well established, financially secure and fully qualified. They enjoy an excellent reputation in the local construction industry.

The undersigned surety is licensed in the State of Utah and listed on the US Treasury Circular 570 and currently enjoy an AM Best rating of A++, with Financial Size Category of XV.

The Contractors bonding capacity in the single project level is \$150,000,000, with an aggregate level of \$500,000,000. It is our representation that adequate bonding capacity remains for the referenced contractor to perform projects and fulfill bonding requirements. The procurement of surety credit is a matter between us and our client and assumes that we and our client are satisfied with the terms and conditions of the contract documents.

If we can provide you with additional information regarding the strengths of W. W. Clyde & Co., please don't hesitate to contact me.





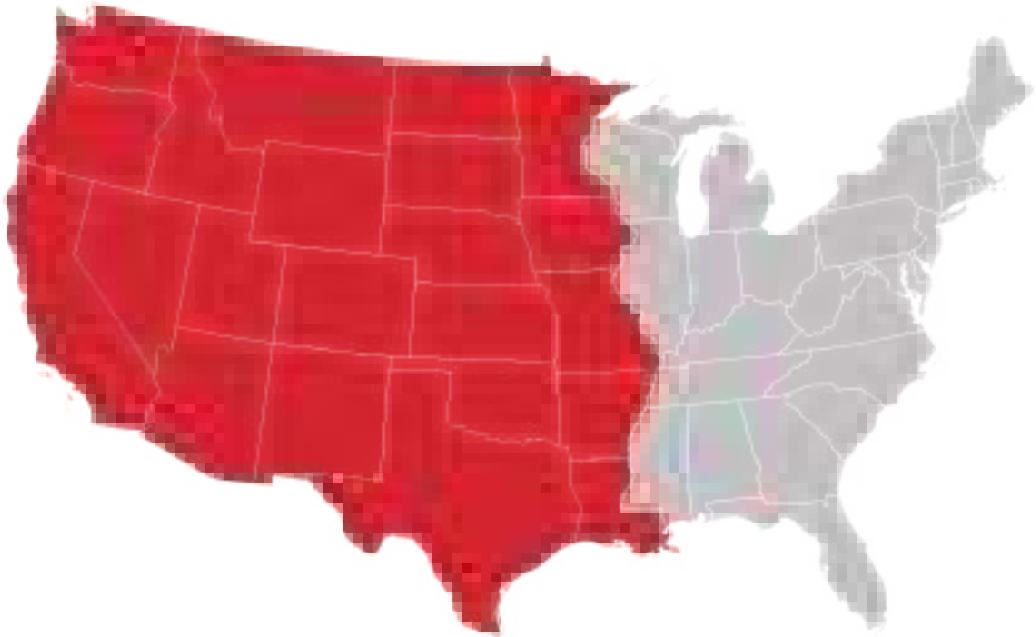
TRAVELERS CASUALTY AND SURETY COMPANY OF AMERICA

Danielle Marchant
Attorney-In-Fact

Copy: Travelers Casualty and Surety Company of America
W. W. Clyde & Co.

302 WEST 5400 SOUTH, SUITE 101 | SALT LAKE CITY, UTAH 84107 | BEEHIVEINSURANCE.COM | 801.685.6860

MARKET AREA



WWC was founded in Springville, Utah by Wilford W. Clyde. As the largest locally owned and operated civil construction company in Utah, you have a contractor who has immense experience in civil construction, mines, utilities, highways, pipelines, bridges, dams, airports, and environmental reclamation projects throughout the region.

We are willing, prepared, and capable to work in any state west of the Mississippi. Whether in an urban area or remote desert location, we are prepared to take on any challenging project in your unique geographic location with our broad expanse of experience across the Intermountain West. We are interested in creating new partnerships.

PRECONSTRUCTION SERVICES, EARLY CONTRACTOR INVOLVEMENT

WWC has experience and confidence in alternative delivery building methods, and we recognize the advantages inherent to alternative delivery procurement. We know how to maximize collaboration with designers and owners in order to deliver projects faster, minimize risk, reduce cost, improve constructability, and implement innovative ideas and solutions.

WWC has completed over \$1B in CMGC and Design-Build projects since 2004. Contractor early involvement during the feasibility and design phases identifies risks, mitigating actions, and value engineering, yielding cost and schedule savings.

wwclyde.net

This experience has allowed us to develop proven preconstruction services that can benefit any partnership. These services include:

- Constructability input and reviews
- Preconstruction site surveys, with the latest technology
- Earthwork flow analysis
- Earthwork model review
- Value engineering
- Risk assessment
- Preliminary schedule and estimate development for civil components



**WWC'S PRECONSTRUCTION SERVICES HELPED DEVELOP
A SAFER AND INNOVATIVE ALTERNATIVE FOR THE
KESSLER CANYON TUNNEL REHABILITATION PROJECT**

*Kessler Canyon Tunnel Rehabilitation
Kessler Canyon, Utah*



**WE VALUE PEOPLE
OUR WORD IS OUR BOND
ALWAYS GIVE A FULL MEASURE
WE CONTINUOUSLY IMPROVE**

CORE VALUES

WWC has a reputation of integrity, quality, and treating people with dignity and respect. This reputation reflects our core values: **We Value People, Our Word is Our Bond, Always Give a Full Measure, and We Continuously Improve.** These values have been guiding us since the beginning and are our standard, which is proven by the long list of awards and accolades we have received over the years for our high quality, industry excellence, outstanding safety record, and successful partnering methods.

CONTACT US

WWC welcomes new opportunities, tough projects, and helping to build better communities. Contact us for partnering opportunities!

John Sweeney
Area Manager
jsweeney@wwclyde.net
520-979-7821

SOUTHWEST DIVISION
O 480.985.2112
4030 E Quenton Dr #116
Mesa, AZ 85215

Paul McGee
Estimator/Project Manager
pmcgee@wwclyde.net
505-330-3823

Materion - Rainbow Phase 2 LMU 2-3
Delta, Utah



**TOUGH PROJECTS.
INNOVATIVE SOLUTIONS.**



wwwclyde.net