

Complete fluid solutions engineered to meet any project demand.



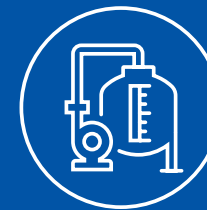
Your one stop for all fluid solutions.

Industrial, construction, mining & quarry, municipal bypass and disaster recovery – if you need fluid solutions, United Rentals is your source. We specialize in providing standard and custom rentals for any industrial or commercial fluids application. United Rentals is North America's largest equipment rental supplier, with experts to help you with complete fluid transfer, treatment, and containment solutions.



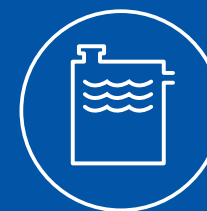
Customized Pump Solutions

Unique conditions can make it hard to find a standard pump that meets your needs. Talk to our experts about designing and building a solution for your specific job.



Filtration Systems

Whether planned or unexpected, jobsites often come with liquid and vapor filtration challenges. Let United Rentals design the right filtration solution for your project needs.



Containment Solutions

Effective management of liquids and wastewaters is an important component of many jobsites. United Rentals provides a range of tanks, roll-off boxes, and specialty containment options.



Commitment to Safety

On the yard, on the road, and on your jobsite, the United Rentals' commitment to safety means our first consideration is the well-being of all team members.



Fluid Solutions Specialists

Choosing the right equipment up front can save money and time later. From planning and installation to complete jobsite support, we'll help you find the best and most cost-effective solution.

Fully equip your jobsite for any fluids challenge

Filtration

Whether sand, bag, specialty media or more complex filtration technologies, United Rentals has the equipment and expertise necessary for your fluid filtration needs.

Tank Monitoring

Providing real-time, customizable access to your tank volumes via your laptop, tablet or smartphone, all in an API 500 Compliant and ETL Certified package.

Tanks

A broad range of liquid and solids containment equipment including frac tanks, mix tanks, poly tanks, roll-off boxes and specialty containment options.

Pumps

From single pump rentals to custom-designed high flow rate fluid transfer systems, our pump experts will put the right solution on your jobsite for your project needs.

Hose, Pipe & Fittings

HDPE, layflat, steel, aluminum, camlock, Victaulic, Bauer and more, the right interconnects to optimize your fluid transfer system.



High Volume Pumps

High Volume Centrifugal Pumps are designed to meet unique job challenges – providing high flows, rapid priming and unparalleled efficiency. All pumps offer advanced run-dry mechanical seals, LOFA auto-start/stop control panels and plug-in GPS telemetry.

Features and Options

- Vacuum Assisted Packages 3–30"
- Flow Rates up to 45,000 GPM
- TDH up to 250'/108 PSI
- CA6NM Hardened Stainless Impeller
- 50 CFM Dry-Priming Vacuum Pump
- Stainless Steel Diesel or Electric



Model	Size in (cm)	Flow gpm (m³/m)	TDH ft (m)	Solids in (cm)
PP44S10	4 x 4 (10.1 x 10.1)	1520 (5.8)	146 (44.5)	3 (7.6)
PP66S12	6 x 6 (15.2 x 15.2)	2700 (10.2)	163 (49.7)	3 (7.6)
Super PP66S14	6 x 6 (15.2 x 15.2)	3400 (12.9)	248 (75.6)	3 (7.6)
Super PP88S12	8 x 8 (20.3 x 20.3)	4600 (17.4)	180 (54.9)	3 (7.6)
PP1212S17	12 x 12 (30.4 x 30.4)	9270 (35.1)	122 (37.2)	4.5 (11.4)
Super PP1212S17	12 x 12 (30.4 x 30.4)	9230 (35.0)	190 (57.9)	4.5 (11.4)
PP1414S17	14 x 14 (35.5 x 35.5)	12300 (46.6)	188 (57.3)	4 (10.2)
Super PP1818S225	18 x 18 (45.7 x 47.5)	19350 (73.3)	216 (65.8)	4.5 (11.4)
PP3030S34	30 x 30 (76.2 x 76.2)	45000 (170.6)	125 (38.1)	5.9 (14.9)

High Head Pumps

When your job requires pumping long distances, elevation changes, or overcoming a pressurized header system, our high head pumps are here to help.

Features and Options

- Vacuum Assisted Packages 3–12"
- Flow Rates up to 9000 GPM
- TDH up to 750'/325 PSI
- CA6NM Hardened Stainless Impeller
- 50 CFM Dry-Priming Vacuum Pump
- Stainless Steel Diesel or Electric



Model	Size in (cm)	Flow gpm (m³/m)	TDH ft (m)	Solids in (cm)
Super PP43C21	4 x 3 (10.2 x 7.6)	710 (2.7)	770 (234.7)	0.78 (2)
PP53C14	5 x 3 (12.7 x 7.6)	855 (3.2)	292 (89.0)	0.75 (1.9)
PP63C17	6 x 3 (15.24 x 7.6)	1200 (4.5)	510 (155.4)	0.75 (1.9)
PP64S17	6 x 4 (15.2 x 10.2)	2550 (9.7)	408 (124.4)	3 (7.6)
Super PP64C21	6 x 4 (15.2 x 10.2)	1350 (5.1)	610 (185.9)	0.88 (2.2)
PP86S17	8 x 6 (20.3 x 12.2)	4880 (18.5)	352 (107.3)	3 (7.6)
Super PP86C21	8 x 6 (20.3 x 12.2)	3745 (14.2)	600 (182.9)	1.5 (3.8)
PP108S17	10 x 8 (25.4 x 20.3)	7180 (27.2)	380 (115.8)	3.5 (8.9)
Super PP108S17	10 x 8 (25.4 x 20.3)	8040 (30.5)	491 (149.7)	3.5 (8.9)
PP128S22	12 x 8 (30.5 x 20.3)	8950 (33.9)	430 (131.1)	3 (7.6)

dBa Silencer Pumps

Registering well below common municipal noise regulations, the sound-attenuated dBa Silencer Pump is a safe and reliable solution for municipal and construction pump applications.

Features and Options

- High Volume & High Head
 - Packages from 4–18"
 - Flows up to 12,500 GPM
 - TDH up to 380'/165 PSI
- Solids Handling up to 4.5"
 - 50 CFM Dry-Priming Vacuum Pump
 - CA6NM Hardened Stainless Impeller
 - Emits 68 dBa at 25'



Model	Size in (cm)	Flow gpm (m³m)	TDH ft (m)	Solids in (cm)
SAPP44S10	4 x 4 (10.2 x 10.2)	1525 (5.8)	147 (44.8)	3 (7.6)
SAPP66S12	6 x 6 (15.2 x 15.2)	2700 (10.2)	163 (49.7)	3 (7.6)
SAPP88S12	8 x 8 (20.3 x 20.3)	4600 (17.4)	180 (54.9)	3 (7.6)
SAPP108S17	10 x 8 (25.4 x 20.3)	7180 (27.2)	380 (115.8)	3.5 (8.9)
SAPP1212S17	12 x 12 (30.5 x 30.5)	9230 (35.0)	190 (57.9)	4.5 (11.4)
SAPP1818S17	18 x 18 (45.7 x 45.7)	12500 (47.4)	177 (53.9)	3.4 (8.6)

Wellpoint Pumps

Wellpoint Pump systems manage groundwater with industry-leading efficiency and performance – keeping your crew safe and your project on track.

Features and Options

- Sizes from 6–8"
 - Flows up to 1460 GPM
 - Rotary & Piston Models
 - Low Fuel Consumption
 - Sound-Attenuated Models
- High Volume Air Handling
 - Integrated Fuel Tank
 - Wellpoints, Swing Arms, Grommets & Header Pipe Accessories



Model	Type	Size in (cm)	Flow gpm (m³m)	TDH ft (m)	L x W x H in (cm)	Horse-power	Fuel Capacity g (l)	Consumption gph (lph)	Run Time Hours
PT-90	Piston	6 x 6 (15.2 x 15.2)	396 (1.5)	66 (20.1)	90 x 41.3 x 60.8 (288.6 x 104.9 x 154.4)	8.3	48 (181.7)	0.4 (1.5)	170
PT-250	Piston	8 x 8 (20.3 x 20.3)	836 (3.2)	66 (20.1)	98.5 x 49.2 x 75 (250.2 x 125 x 191)	20	80 (302.8)	0.8 (3.0)	170
RL-200	Rotary	8 x 8 (20.3 x 20.3)	1458 (5.5)	120 (36.6)	100 x 50 x 68 (254 x 127 x 172.7)	42.3	125 (473.2)	0.6 (2.3)	210

Air Operated Diaphragm Pumps

Lightweight AOD Pumps move virtually any liquid safely and effectively.

Features and Options

- Sizes from 1–3"
 - Flows up to 260 GPM
 - TDH up to 250'/108 PSI
 - Aluminum, Stainless Steel & Polypropylene Models
- Self-Priming, Run-Dry Pumps
 - Capable of Handling up to 90% Solids Material



Model	Size in (cm)	Construction	Operating Pressure psi (bar)	Flow gpm (m³m)	Bolted or Clamped	Fluid Connection	Weight lb (kg)
E1AA2R229C	1 (2.54)	Aluminum/Buna	125 (8.6)	49 (0.19)	bolted	NPT Female Threaded	27 (12.24)
E1PA5T5T9C	1 (2.54)	Polypropylene/Teflon	100 (6.9)	36 (0.14)	bolted	ANSI 150# Flanged	17 (7.71)
E1SA5T559C	1 (2.54)	Stainless Steel	125 (8.6)	49 (0.19)	bolted	NPT Female Threaded	40 (18.17)
E2AA2R229C	2 (5.08)	Aluminum/Buna	125 (8.6)	163 (0.62)	bolted	NPT Female Threaded	65 (29.5)
E2PA5T5T9C	2 (5.08)	Polypropylene/Teflon	100 (6.9)	145 (0.55)	bolted	ANSI 150# Flanged	69 (31.3)
E2SA5T5S9C-HD	2 (5.08)	Stainless Steel/Teflon	125 (8.6)	160 (0.61)	bolted	ANSI 150# Flanged	114 (51.7)
E3AA2R220C	3 (7.62)	Aluminum/Buna	125 (8.6)	234 (0.89)	clamped	NPT Female Threaded	108 (49.0)
E3PQ5T559	3 (7.62)	Polypropylene/Teflon	100 (6.9)	238 (0.89)	bolted	ANSI 150# Flanged	231 (104.78)
E3SA5T559C	3 (7.62)	Stainless Steel/Teflon	125 (8.6)	273 (1.03)	bolted	ANSI 150# Flanged	245 (111)

Submersible Pumps

For dewatering, slurry or waste water applications.



Hydraulic Submersible Pumps & Power Units

- Sizes from 2–12"
- Flows up to 8250 GPM
- TDH up to 140'/61 PSI
- Trash, Vortex & High Head Models
- Stainless Steel Pumps Available
- Ideal for Applications Where Suction Lift Exceeds 28'
- Variable Speed Operation
- Automatic Safety Shutdowns

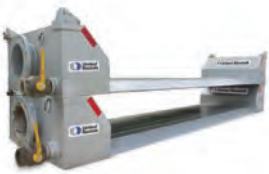


Electric Submersible Pumps

- Sizes from 2–10"
- Flows up to 5500 GPM
- TDH up to 340'/147 PSI
- Models from 2–94 Horsepower
- Ideal for Applications Where Suction Lift Exceeds 28'
- Turnkey Power Generation Packages
- Auto-Start/Stop Control Panel and Float Switches
- Capable of Handling Contaminated Fluids, Viscous Slurries and up to 3" Solids
- Built-In Thermal Overload Protection
- Stainless Models Available

Hose, Pipe & Fittings

Our experts can assess your job properly and recommend the most efficient hose, pipe and accessories.



Road Crossings
• Sizes 2–18"
• Lengths 12–24'



Containment Berms
• UV & Chemical Resistant
• Sizes Available on Request



Fuel Tanks
• 500–1260 Gallon Capacities
• Stackable for Mobilization & Storage

Water Suction Hose

Sizes in (cm): 2–12 (6–31)
Max psi (bar): PVC 50 (3.4)
Kanaflex 70 (4.8)
Rubber 150 (10.3)
Material: PVC, Kanaflex, Rubber
Fittings: Camlock, Quick-Connect



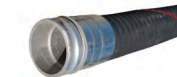
Layflat Discharge Hose

Sizes in (cm): 2–12 (6–31)
Max psi (bar): 150 (10.3)
Material: Rubber (Oil Resistant)
Fittings: Camlock, Quick-Connect



Tank Truck Hose

Sizes in (cm): 2–8 (5–21)
Max psi (bar): 150 (10.3)
Material: Nitrile
Fittings: Camlock, 150# Flange Quick-Connect



Oil Suction & Discharge Hose

Sizes in (cm): 3–14 (8–36)
Max psi (bar): 250 (17.2)
Material: Nitrile
Fittings: 150# Flange, 300# Flange



Chemical Hose

Sizes in (cm): 2–8 (5–21)
Max psi (bar): 200 (13.8)
Material: UHMW Polyethylene
Fittings: SST 150# Flange, SST Camlock



Stainless Steel Braided Hose

Sizes in (cm): 2–8 (5–21)
Max psi (bar): 200–400 (13.8–27.6)
Material: 316 Stainless Steel Double Braided
Fittings: 150# Flange, 300# Flange



Air Hose

Sizes in (cm): 3/4–3 (2–8)
Max psi (bar): 200–500 (13.8–34.5)
Material: Rubber, Textile Braided
Fittings: Crows Foot, Bull/Boss

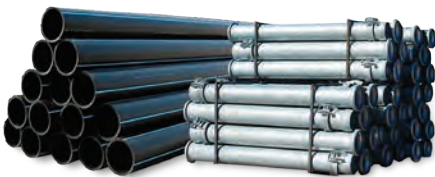


HDPE Pipe

Sizes in (cm): 4–36 (10.2–91.4)
Max psi (bar): DR 17 30 (9.0)
DR26 80 (5.5)
DR32.5 65 (4.5)
Material: HDPE DR17
HDPE DR26
HDPE DR32.5

Quick Connect Pipe

Sizes in (cm): 4–12 (10.2–30.5)
Max psi (bar): 175 (12.1)
Material: Laminated Steel



Quick Connect Y



90° Fitting



Flanged Reducer



Flanged T



45° Quick Connect



Gate Valve

Steel Tanks

Storage tanks are an important component of many jobsites. United Rentals offers a wide variety of tank solutions, gauges, alarms, and remote liquid-level monitoring systems specifically designed to keep your project running smoothly.

Vapor Proof Tanks

Ideal Usage

Process plant, industrial, construction, commercial and oil field applications, pipeline projects, sewage plant outages, drilling, chemical storage.

Benefits

“V” bottom and round bottom floor designs for easy clean out. Tanks can be manifolded together for large projects.



Open Top Weir Tanks

Ideal Usage

Construction, runoff and environmental groundwater projects that require suspended solids separation.

Benefits

Provides for quickest access and viewing of tank contents when vapor containment is not required. Available with customized weirs.



Double Wall Tanks

Ideal Usage

Environmentally sensitive liquid and vapor containment. Containment near rivers, lakes, bays and urban areas.

Benefits

Built-in secondary containment for maximum environmental protection. Large top vapor proof hatches for easy access.



Mini Tanks

Ideal Usage

Refineries, chemical facilities, wastewater treatment plants, tank cleaning and heating thick materials, environmentally sensitive liquid and vapor containment where a smaller footprint is required.

Benefits

The benefits of Mix, Double Wall, and Frac Tanks with a reduced footprint for tight jobsites.

Specialty Tanks

Jobsite needs and requirements are not always the same. United Rentals provides a range of specialty tank options to keep you up and running whatever the containment challenge.

Mix/Coil Tanks

Ideal Usage

Refineries, chemical facilities, wastewater treatment plants, tank cleaning and heating thick materials.

Benefits

Top-mounted injection ports and oversized hatches provide for easy addition of materials to be mixed. Four 10HP dual blade mixer assemblies and heating coils are standard.



Gas Buster Tanks

Ideal Usage

Flowback or drill out operations to catch fluids, sand and sediments.

Benefits

Streamline clean out, reduce wastewater and simplify sampling.



Modular Tanks

Ideal Usage

Drilling sites, pipeline projects and smaller jobs where space is a problem. Provides quick and temporary liquid storage for drilling operations.

Benefits

Modular Tanks can be delivered in as few as two trucks and set up or dismantled within 10 hours, providing quick and temporary liquid storage for your drilling, pipeline flush or other large volume needs.



Upright Tanks

Ideal Usage

Circulating to maintain suspension, mixing additives or reconditioning your product where maximum volume with a minimal footprint is required.

Benefits

Reduced site footprint, easy manifolding, little to no product loss, reduced cleaning costs and difficulty with conical design and patented rinsing technology.

Roll-Off Boxes

Proper management of waste liquids and solids is an essential aspect of maintaining a safe work environment. United Rentals has a wide variety of roll-off boxes for all your project needs.

Roll-Off Boxes

Ideal Usage

Solid waste containment in environmental soil cleanup projects and tank cleaning.

Benefits

Most offer 4-wheel maneuverability. Gasketed door with rear door binders for full compression sealing.



Intermodals

Ideal Usage

Highway, waterway and railway transport. Large environmental cleanup projects. Stores sludge and solid waste.

Benefits

Most offer 4-wheel maneuverability. Gasketed door with rear door binders for full compression sealing.



Dewatering Boxes

Ideal Usage

Freeing water from sludge and slurry. Perfect for non-pumpable dewatering situations. Sewer and other clean outs.

Benefits

Stainless steel screen with filter cloths for customized needs. Gasketed door for full compression sealing.



Vacuum Boxes

Ideal Usage

Projects using vacuum trucks to move sludge and solids: auto manufacturing, paint booths and paper mills.

Benefits

Keeps vacuum trucks or other air movers operating full time. Gasketed door for full compression sealing.

Poly Tanks

Poly tanks provide effective storage of caustic and acidic materials on-site. United Rentals can provide the right poly tank for your jobsite along with containment berms for particularly sensitive environmental situations.

Roll-Off Poly Tanks

Ideal Usage

Tank bottoms, acids and caustics, fresh or spent chemicals.

Benefits

Designed for ease of delivery or will call transportation without oversized permit requirements. Convenient gravity draining and second top hatch for easy clean out.



Total Drain Poly Tanks

Ideal Usage

Tank bottoms, storm and groundwater, acids and caustics, fresh or spent chemicals.

Benefits

Ideal for most acids, chemicals and caustics. Designed for quick and easy gravity draining and clean out.



Berms – Poly Tanks

Ideal Usage

Projects that require an additional level of containment, particularly environmentally sensitive situations.

Benefits

Convenient and easy to set up. Excellent chemical compatibility.

Filtration

United Rentals filtration systems provide effective liquid and vapor filtration capabilities delivered and setup on your jobsite and designed for your project needs.

10K Filtration System

Ideal Usage

Construction, environmental and industrial liquid phase contaminant removal.

Benefits

Skid mounted and fully assembled for rapid delivery & setup, plumbed for lead/lag operation, ASME code vessels with stainless steel internals.



Bag/Multiple Bag

Ideal Usage

Industrial and commercial process fluids, urban runoff, groundwater discharge from construction sites or stormwater.

Benefits

Coarse filtration in a portable unit. Low or moderate flow particulate removal. Quick installation. Meets municipal requirements for nationwide use.



Odor Control

Ideal Usage

Sewer bypass and other temporary odor control projects. SCAQMD approved.

Benefits

Adjustable flow range. Variable frequency drive. Sound attenuation. Inlet/outlet sample ports. Simple operation. Meets local regulations.



Specialty Media

Ideal Usage

Environmental and industrial contaminant removal, liquid and vapor phase.

Benefits

Modular, skid mounted for portability. Backwashing capabilities. Influent/effluent gauges and sample ports.



CL-250 Clarifier System

Ideal Usage

The CL-250 Clarifier Insert provides effective solids removal capabilities for industrial water treatment, construction dewatering, and sediment removal.

Benefits

The inclined plate design creates up to 10X more surface area than the actual footprint of the clarifier frac tank.



Multiple Cartridge

Ideal Usage

Construction, environmental, and industrial applications.

Benefits

Portability. Flange-to-flange connections. Continuous operation even during maintenance or filter changes. Reduced mobilization costs.



Sand/Multi-Media

Ideal Usage

Construction, environmental and industrial sediment removal.

Benefits

Fully automated. Antisiphon valves. Easy-to-read gauges. Tool-free plumbing connections. User-friendly. Energy efficient. Lower labor costs.



Chemical Scrubbers Pure-Air 500

Ideal Usage

Designed to remove hydrocarbons from vacuum truck pump exhaust.

Benefits

Removal efficiencies as high as 98.5% for hydrocarbons. Includes stainless steel internal distributor, mist eliminator, check valve sample ports and knock-out canister.



Chemical Scrubbers Pure-Air 6000

Ideal Usage

Designed for high-flow vapor filtration applications. Complements Air Movers or GapVacs producing large airflows and pressure displacement.

Benefits

Removal efficiencies as high as 98.5% for hydrocarbons. Ability to recycle chemical scrubber liquid reduces waste and disposal costs.



EC-250 Mobile Treatment Trailer

Ideal Usage

With the EC-250 Mobile Treatment trailer, United Rentals can do it all at your site, reducing the cost and risk of transferring to a water treatment plant.

Benefits

Customizable systems that can retrofit a customer's current waste water treatment setup. Lower disposal costs due to non-hazardous solid waste.

Specialty and Accessories

Specialty equipment and accessories when and where you need them.

Stainless Tankers

Ideal Usage

Chemical storage and transport.
Distribution of finished, intermediate and waste products.
Storage of product overruns.

Benefits

Roadworthy, reliable, DOT-approved interim storage and transfer. Minimizes cross contamination and cleaning cost.



220 Barrel Tanks

Ideal Usage

Used for sediment settling for construction projects. Chemical sludge mixing. Feed system for dewatering.

Benefits

Smooth interior wall for easy cleanout. Urethane exterior coating. Skid mounted.



Bulk Containers

Ideal Usage

Acidic and caustic storage and transport for refineries, chemical facilities, and wastewater treatment plants.

Benefits

All wetted surfaces are made of stainless steel. Stackable and suited for storage of flammable materials.



Gauges and Alarms

Ideal Usage

Gauges assist in measuring liquid levels of process and storage vessels. Alarms aid in preventing spills, personnel exposure and overloading.

Benefits

Radar liquid level gauges provide high level of accuracy in continuous volume measurement. Tank alarms help prevent overfilling.

Engineering Services

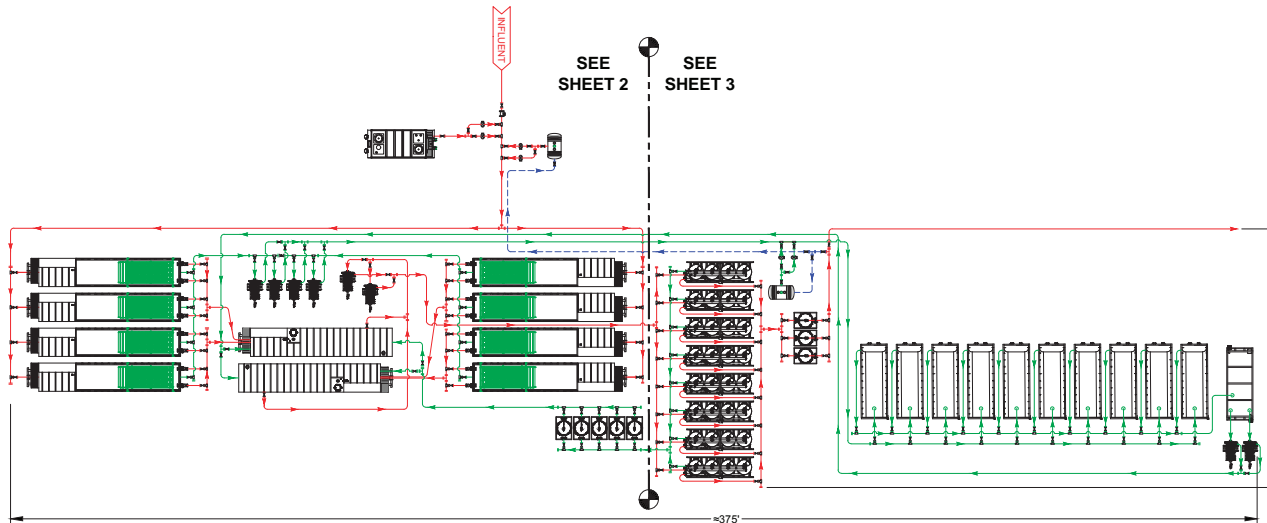
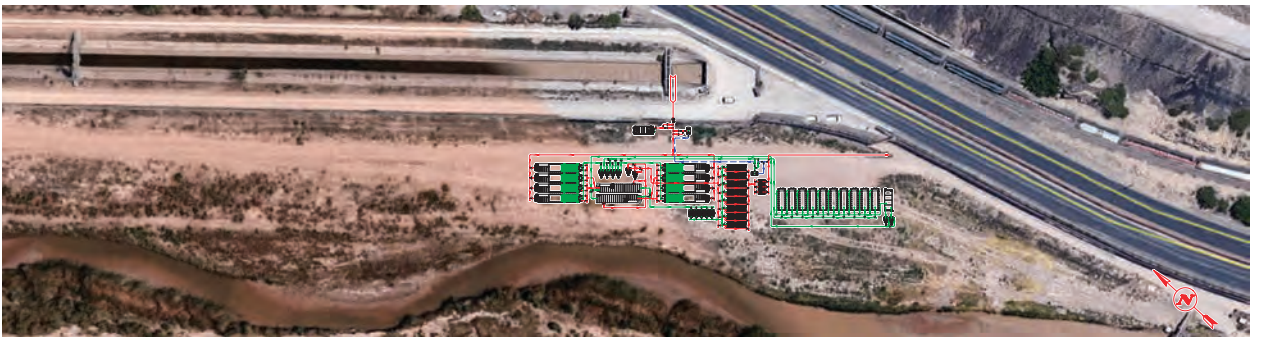
United Rentals knows that fluid applications can be challenging. Our application experts analyze each project and match the best equipment solution to your jobsite needs.

As part of our commitment to your jobsite success, United Rentals has an experienced team of engineers who support our application experts on complex projects to ensure your system is designed to project specifications.

From bid documents to CAD designs, United Rentals is with you every step of the way.

Example capabilities

- System layout
- Bypass plans
- Stamped engineered drawings
- Basic design cad drawings
- Chemical compatibility
- Google Earth overlays



United Rentals Pump Monitoring System

Pump telematics is designed to give the customer visibility into the status of the individual unit(s) and system functionality from any smart device while on the job site or off.

- Customizable dashboard view and access to information through Total Control
- Monitor all onboard sensors of the pump such as temperature, rpms, battery, fuel level, etc.
- Optional sensors such as suction vacuum, discharge psi, sump level and flow rate
- Customize alarms to be alerted immediately if system operates outside of parameters (i.e. engine codes)
- Collect and export customized data such as daily flow rates and fuel consumption
- Cost savings by reducing or eliminating “pump watch” personnel

United Rentals Tank Monitoring System

Safety. Visibility. Compliance. Control.

Our Tank Monitoring System was designed to provide real-time, customizable access to your tank volumes with seamless integration to your laptop, tablet, or smartphone, all in an API 500 Compliant and ETL Certified package.

Benefits include:

- View liquid levels, volumes, and flow-rate on a single tank or as many as your project requires
- Avoid costly spills and cleanups from overfilling
- Avoid running empty at critical times in your process
- Reduce tank monitoring stand-by personnel costs
- Reduce frequency of employees working from tank platforms
- Collect project data to understand your tank usage and improve process efficiencies

Safety training and certification when and where you need it

United Academy® is a comprehensive training solution designed to help you reduce the overall cost and complexity of safety training and credential tracking for your employees. With United Academy courses throughout the U.S. and Canada, you can:

- Take classes online 24/7
- Schedule training at one of our branches, or at your worksite
- Access blended learning operator certification courses: online theory and exam supported by live practical evaluations
- Store training and certifications from United Academy and other providers
- Receive wallet cards to access training records anywhere and anytime using our mobile app or a computer
- Select from a robust course catalog that includes OSHA 10/30, Operator Certification, Fall Protection, Trench & Evacuation Safety, and much more

For more information, visit:
UnitedAcademy.ur.com

United Academy®
powered by United Rentals

Unlock a Smarter Worksite Today

Total Control® is a cloud-based worksite management solution that helps you make the most of your equipment fleet rented and owned. This comprehensive, integrated suite of tools and services makes it easy to streamline your processes and cut your annual rental costs by up to a third.

- **See:** View equipment utilization and pinpoint the location of your rented and owned equipment.
- **Manage:** Order and return equipment, save costs across multiple purchase orders and invoices and set alerts for important issues.
- **Measure:** Use our GPS-enabled fleet and years of data to bench mark your equipment performance against your industry peers.
- **Optimize:** Save time and money by right-sizing your fleet for what’s needed to get the job done.

For more information, visit: UnitedRentals.com/TotalControl

Mobile Access: With its intuitive design the United Rentals Mobile App makes it easier than ever to run a smooth and efficient worksite – all from the palm of your hand.

For more information visit Unitedrentals.com/MobileApp



Notes



The best people, equipment and solutions in the industry.

Whatever your projects demand, you can depend on United Rentals from start to finish. Count on the world's largest fleet of rental equipment, 24/7 service and support, over 1,000 locations across North America, and experts ready to help you find the best solutions. When you need to get the job done, we're here to help.



General Rental

Aerial Lift Equipment
Forklifts & Material Handling
Earthmoving Equipment
Compaction Equipment
Concrete & Masonry Equipment
Temporary Lighting



Power & HVAC

Chillers
Power Generation
Air Conditioners
Heaters
Dehumidifiers
Fuel Tanks
Power Distribution



Fluid Solutions

Centrifugal Pumps
Submersible Pumps
Wellpoint Pumps
Pipe, Hose & Fittings
Temporary Storage Tanks
Liquid & Vapor Filtration
Advanced Water Treatment Solutions



Reliable Onsite Services

Portable Toilets & Showers
Standard & Deluxe Units
Restroom & Shower Trailers
Wheelchair Accessible Units
Hand Wash Stations
Laundry Trailers



Tool Solutions

Hoist & Rigging
Specialty Welding
Pneumatic Tools
Hydraulic Tools
Electric Tools



Trench Safety

Pipe Testing Equipment
Confined Space Equipment
Pipe & Construction Lasers
Barricades & Signs
Safety & OSHA Training



UnitedRentals.com | 800.UR.RENTS

© 2020 United Rentals, Inc.