



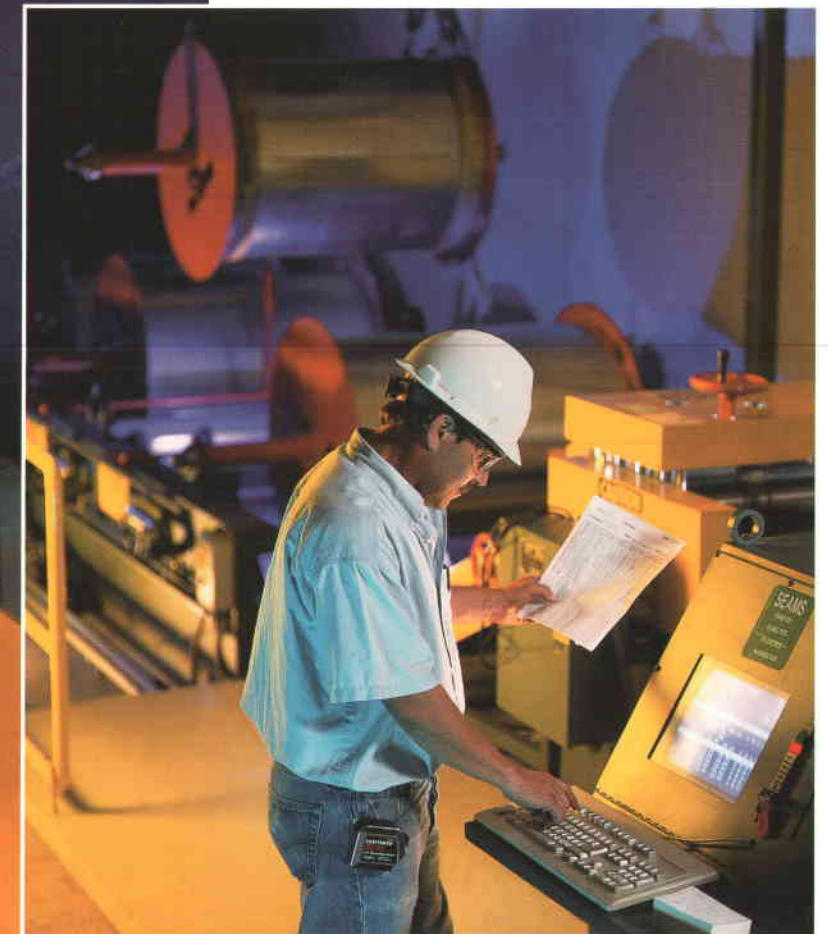
**SINCE 1961,**

R.E. Lee Mechanical

Contracting, Inc. has provided complete in-house mechanical services, including plumbing, process piping, HVAC (heating, ventilating and air conditioning) and site utilities, for a wide variety of commercial, institutional and industrial facilities. Projects range in size from several thousand to several million dollars. Under the direction of founder and current president, R.E. Lee, we have become one of the state's largest mechanical contractors — performing work in southeast and central Arizona as well as in New Mexico and Texas. Our long-standing relationships with local general contractors, architects and engineers reflect our reliability, integrity, and dedication to excellence.



*Our computerized plasma cutter automatically cuts sheet metal into preset shapes for HVAC ductwork.*



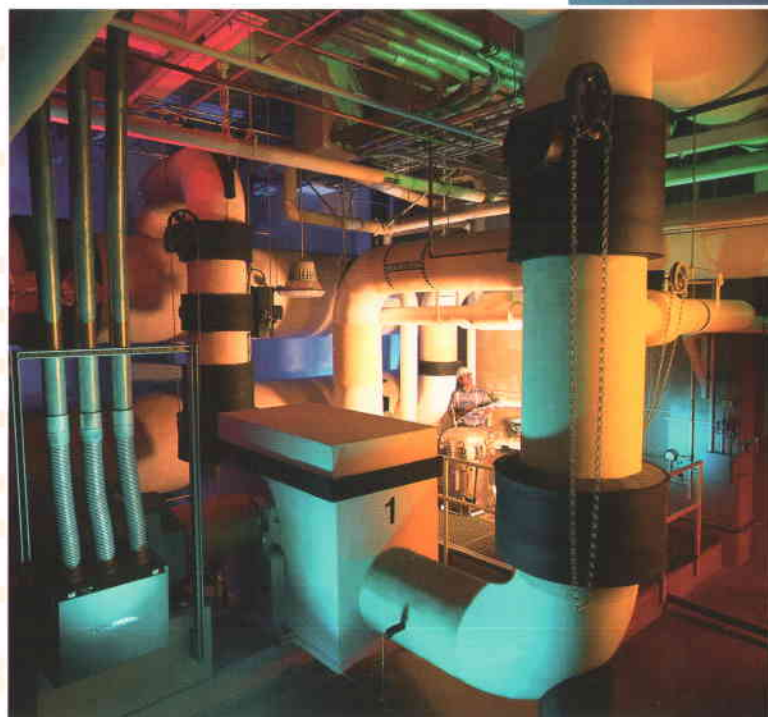
**Above:** Our state-of-the-art coil line system speeds the production process by automatically notching, beading and shearing metal for HVAC duct assembly.

**Left:** HVAC ductwork at The University of Arizona Aerospace & Mechanical Engineering building



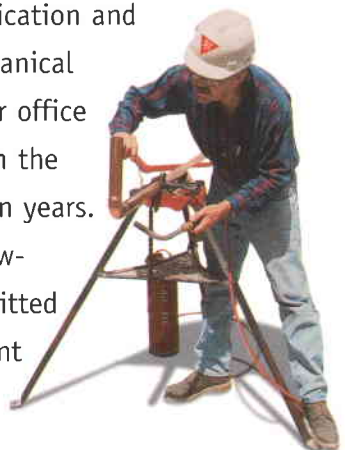
**Above:** Pima Community College West Central Plant

**Right:** Chilled water piping at The University of Arizona North Central Plant



*The University of Arizona Aerospace & Mechanical Engineering Building*

To ensure superior quality and service, all our craftsmen have completed a rigorous, state and federally recognized apprenticeship program that covers plan and specification mastery, safety, code requirements, and the fabrication and installation of mechanical systems. Most of our office staff have been with the company for over ten years. They are highly knowledgeable and committed to providing excellent customer service.







Tucson Electric Park  
(Plumbing and HVAC)



Arizona Portland  
Cement Company  
(Process Piping)



Sunquest Information  
Systems  
(Plumbing and HVAC)



McKale Center  
(Plumbing and HVAC)



2019 E. 17th Street  
Tucson, Arizona 85719  
(520) 623-0355

# R.E. LEE



*R.E. Lee Mechanical Contracting, Inc.*

